

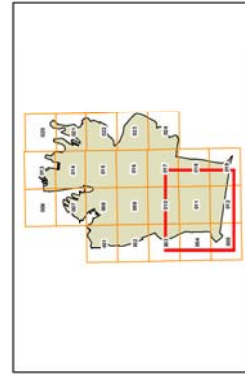


Floor Space Ratio Map

- Employment Lands Strategy boundary
- Maximum Floor Space Ratio (n:1)
 - X 4
 - F 0.6
 - H 0.7
 - J 0.8
 - L 0.9
 - N 1
 - P 1.25
 - S1 1.5
 - S2 1.75
 - T 2
 - U1 2.5
 - U2 2.75
 - V1 3
 - W1 3.5
 - W2 3.75
- AA1 6
- AA2 6.5
- AB1 7
- AB2 7.5
- AC 8
- AD 9
- AE 10
- AF 11
- Refer to clause 6.14
- Refer to clause 6.15A
- Refer to clause 6.4

Cadastral

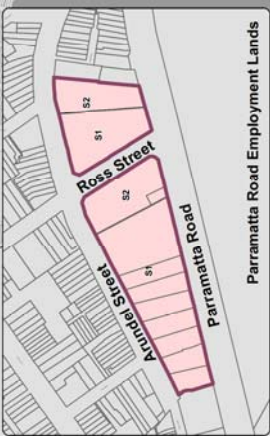
- Cadastral 02/10/2012 © City of Sydney



Scale: 1:10,000 @ A3
0 400 m

Projection: GDA 1984
Zone 55

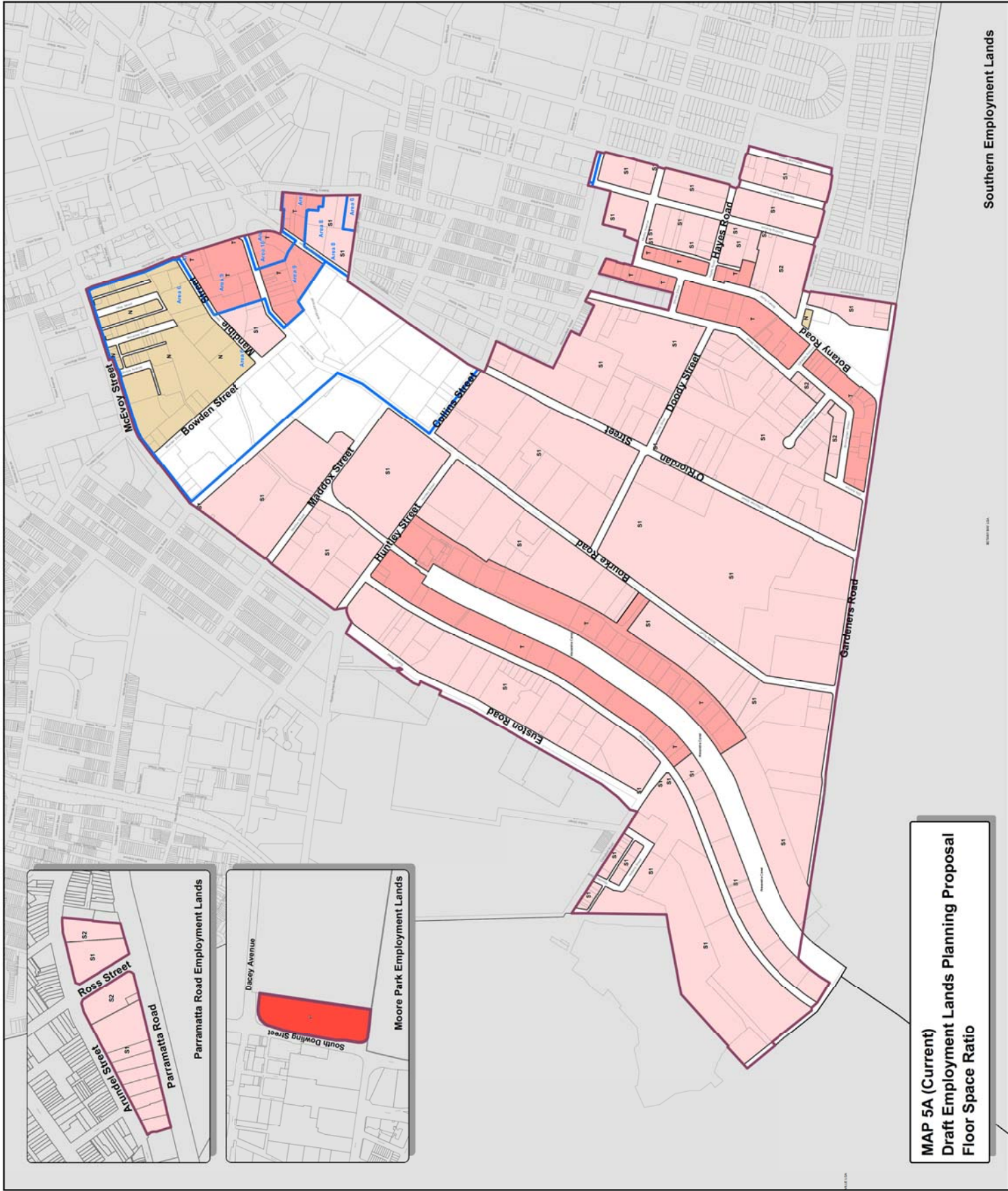
D:\C:\pwworkspace\GIS\EP2012\Map\Implementation2_Plan\muban510222_ELS\ELS_SLEP2012_FR_current.mxd



Parramatta Road Employment Lands



Moore Park Employment Lands



MAP 5A (Current)
Draft Employment Lands Planning Proposal
Floor Space Ratio

© 2012 City of Sydney

Southern Employment Lands



Floor Space Ratio Map

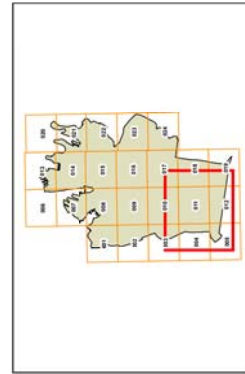
- Employment Lands Strategy boundary
- Affected sites

Maximum Floor Space Ratio (n:1)

- F 0.6
- H 0.7
- G 0.8
- L 0.9
- N 1
- P 1.25
- S1 1.5
- S2 1.75
- T 2
- U1 2.5
- U2 2.75
- V1 3
- W1 3.5
- W2 3.75
- X 4
- Y 4.5
- Z 5
- AA1 6
- AA2 6.5
- AB1 7
- AB2 7.5
- AC 8
- AD 9
- AE 10
- AF 11
- Refer to clause 6.14
- Refer to clause 6.15A
- Refer to clause 6.4

Cadastre

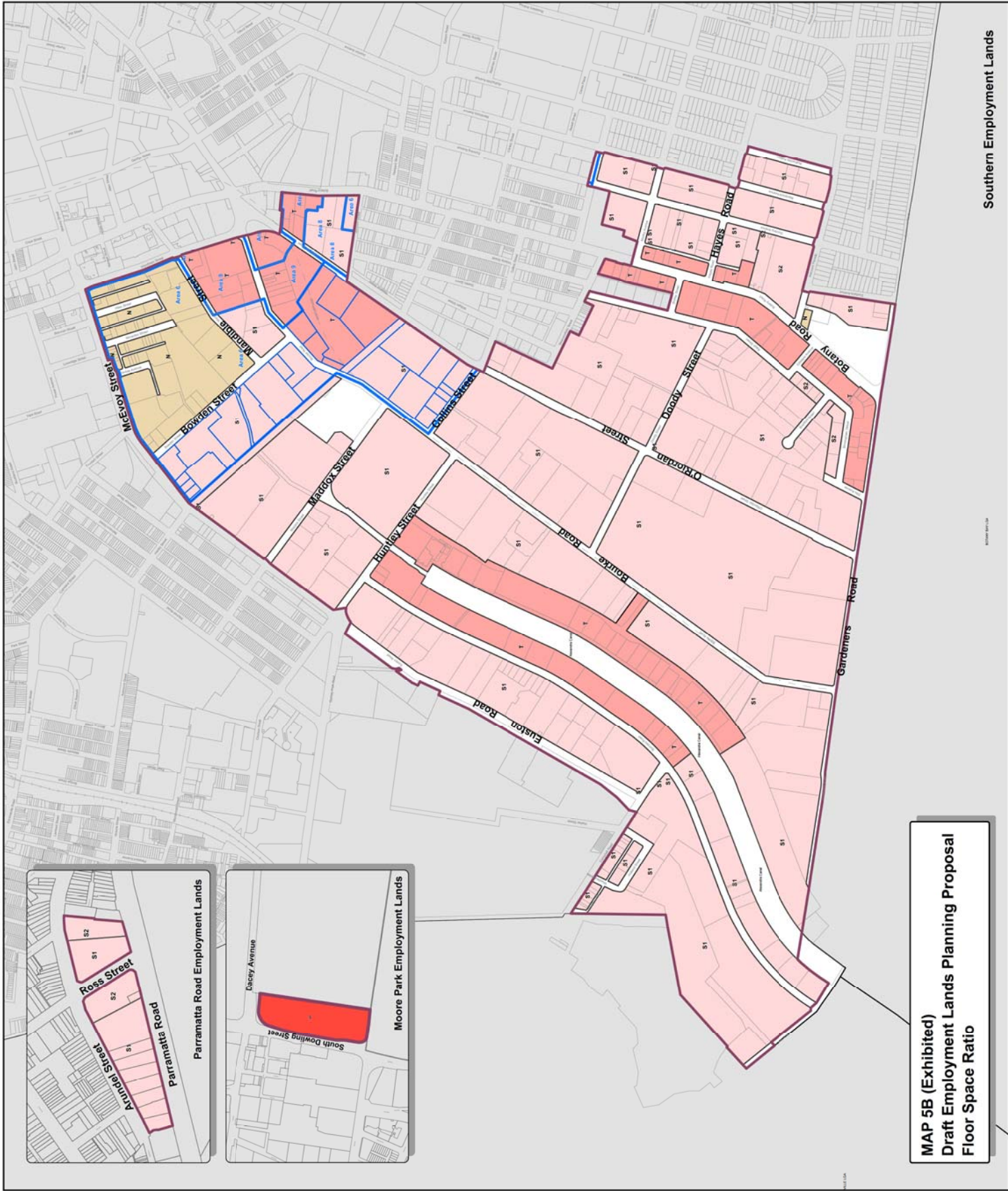
- Cadastre 02/10/2012 © City of Sydney



Scale: 1:10,000 @ A3

Projection: GDA 1994
Zone 95

T:\C:\pwworkspace\EPD\12\Map\environment2_PlanEnvironment2_ELS_Sydney\ELS_Sydney_FSR_Final.mxd



Environment Australia

Southern Employment Lands



Floor Space Ratio Map

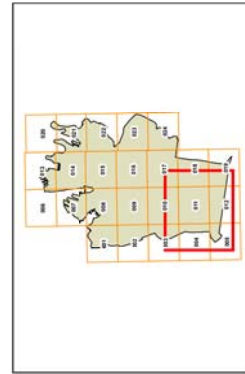
- Employment Lands Strategy boundary
- Affected sites

Maximum Floor Space Ratio (n:1)

- F 0.6
- H 0.7
- G 0.8
- L 0.9
- N 1
- P 1.25
- S1 1.5
- S2 1.75
- T 2
- U1 2.5
- U2 2.75
- V1 3
- V2 3.75
- X 4
- Y 4.5
- Z 5
- AA1 6
- AA2 6.5
- AB1 7
- AB2 7.5
- AC 8
- AD 9
- AE 10
- AF 11
- Refer to clause 6.14
- Refer to clause 6.15A
- Refer to clause 6.4

Cadastre

- Cadastre 02/10/2012 © City of Sydney

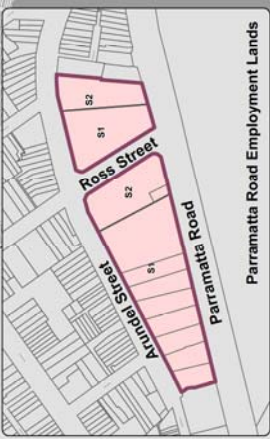
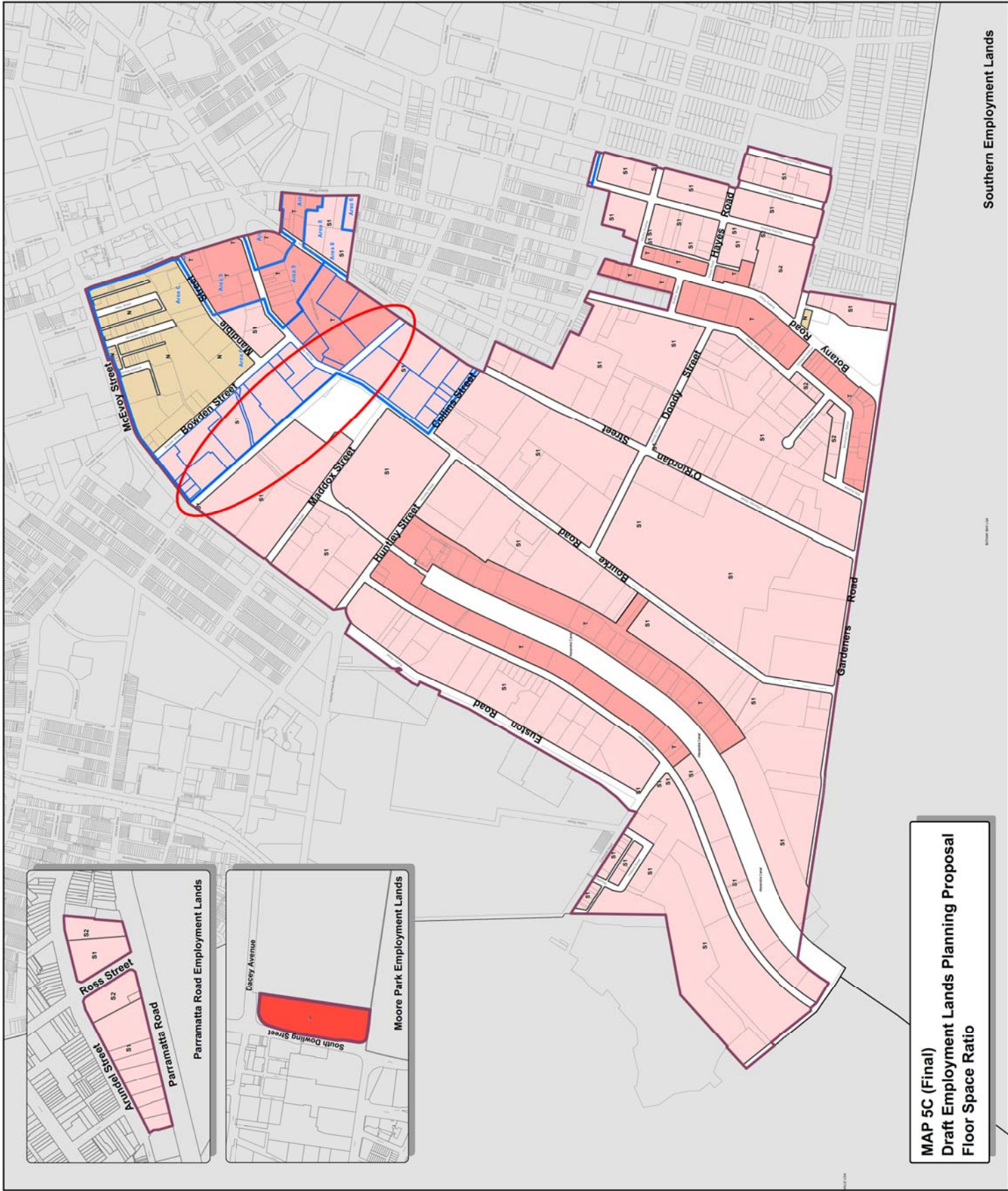


0 400 m

Scale: 1:10,000 @ A3

Projection: GDA 1994
Zone 95

T:\C:\pwworking\Projects\EP2012\Map\environment2_PwrE\mbian\5108258_ELS\FloorSpaceRatio_Sydney_FSR_Final.mxd



MAP 5C (Final)
Draft Employment Lands Planning Proposal
Floor Space Ratio

Height of Buildings Map

Employment Lands Strategy boundary

Maximum Building Height (m)

A	3
W1	40
W2	42
X	45
Y	50
Z	55
AA1	60
AA2	65
AA3	70
AB1	80
AB2	85
AC	110
AD	130
AE	150
AH	235
Area 1	
Area 2	
Area 3	
Area 4	

Maximum Building Height (m)
Heights shown on map in RL (m)

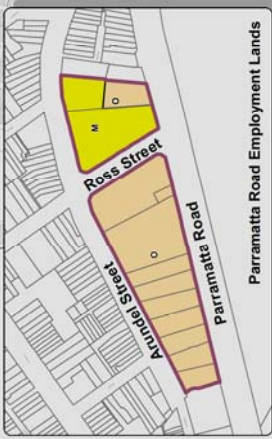
	10
	28.6
	42
	46
	98

Cadastral

Cadastral 02/10/2012 © City of Sydney



Projection: GDA 1994
Zone 55
T:\C:\pwworking\GIS\Projects\EMPs\EMPs\Amendments2_Proposed\Height15102012_ELS\ELS_SLEP2012_HOB_current.mxd



**MAP 6A (Current)
Draft Employment Lands Planning Proposal
Height of Buildings**

Height of Buildings Map

Employment Lands Strategy boundary
Affected sites

Maximum Building Height (m)

A	3	W2	42
E	6	X	45
H	7.5	Y	50
I	8	Z	55
J	9	AA1	60
L	11	AA2	65
M	12	AA3	70
O	15	AB1	80
P	18	AB2	85
R	22	AC	110
S	24	AB	130
T1	25	AE	150
T2	27	AY	235
T3	28	Area 1	
T4	29	Area 2	
U1	30	Area 3	
U2	33	Area 4	
V	35	Area 5	
W1	40		

Maximum Building Height (m)
Heights shown on map in RL (m)

10	46.7
28.6	60
42	71
46	98

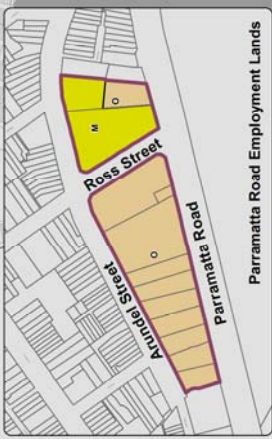
Cadastre

Cadastre 02/10/2012 © City of Sydney



Projection: GDA 1994
Zone 56

T:\GIS\workspace\GIS\ES\12\MAPS\Environmental\1_Plan\Exhibition\ELS\ELS_SLEP2012_HOB_proposal.mxd



Parramatta Road Employment Lands



Moore Park Employment Lands

**MAP 6B (Exhibited)
Draft Employment Lands Planning Proposal
Height of Buildings**

W:\1011101

Height of Buildings Map

Employment Lands Strategy boundary
Affected sites

Maximum Building Height (m)

A	3	W2	42
E	6	X	45
H	7.5	Y	50
I	8	Z	55
J	9	AA1	60
K	11	AA2	65
L	12	AA3	70
M	15	AB1	80
N	18	AB2	85
O	22	AC	110
P	24	AD	130
R	25	AE	150
S	27	AH	235
T1	28	Area 1	
T2	29	Area 2	
T3	30	Area 3	
T4	33	Area 4	
U1	35	Area 5	
U2	40		
W1	46		

Maximum Building Height (m)
Heights shown on map in RL (m)

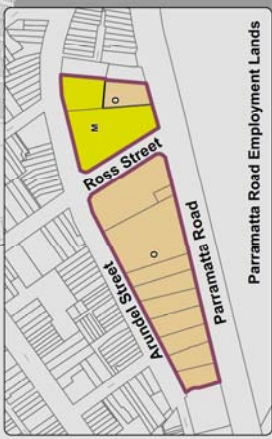
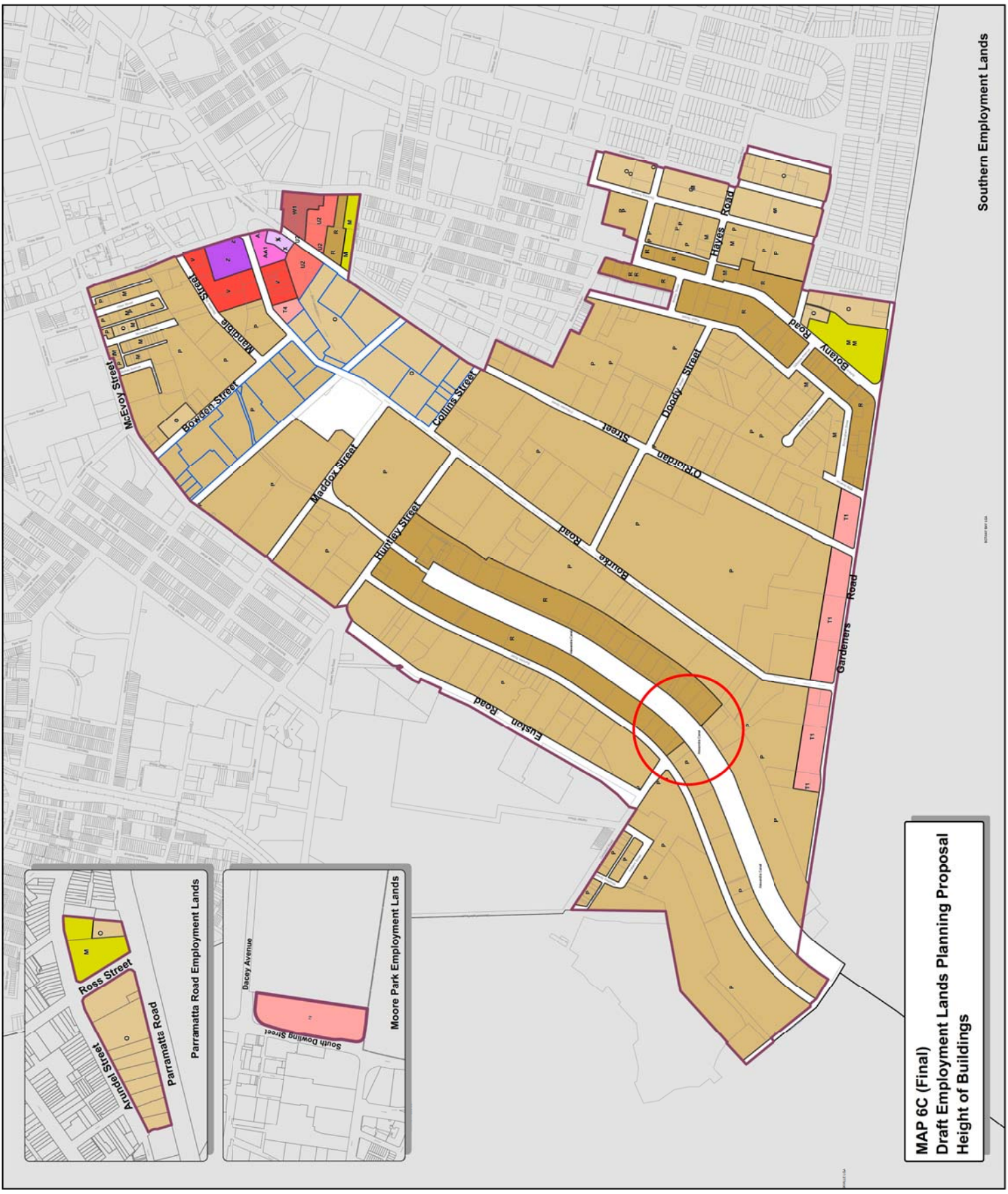
10	46.7
28.6	60
42	71
46	98

Cadastre

Cadastre 02/10/2012 © City of Sydney



Projection: GDA 1984
Zone 56
T:\CityPlan\SEPL\EP12\13\AM\Amendment2_Final\shaders\10258_ELS_Sydney\SEPL2012_H08_final.mxd



**MAP 6C (Final)
Draft Employment Lands Planning Proposal
Height of Buildings**

Sydney Local Environmental Plan 2012



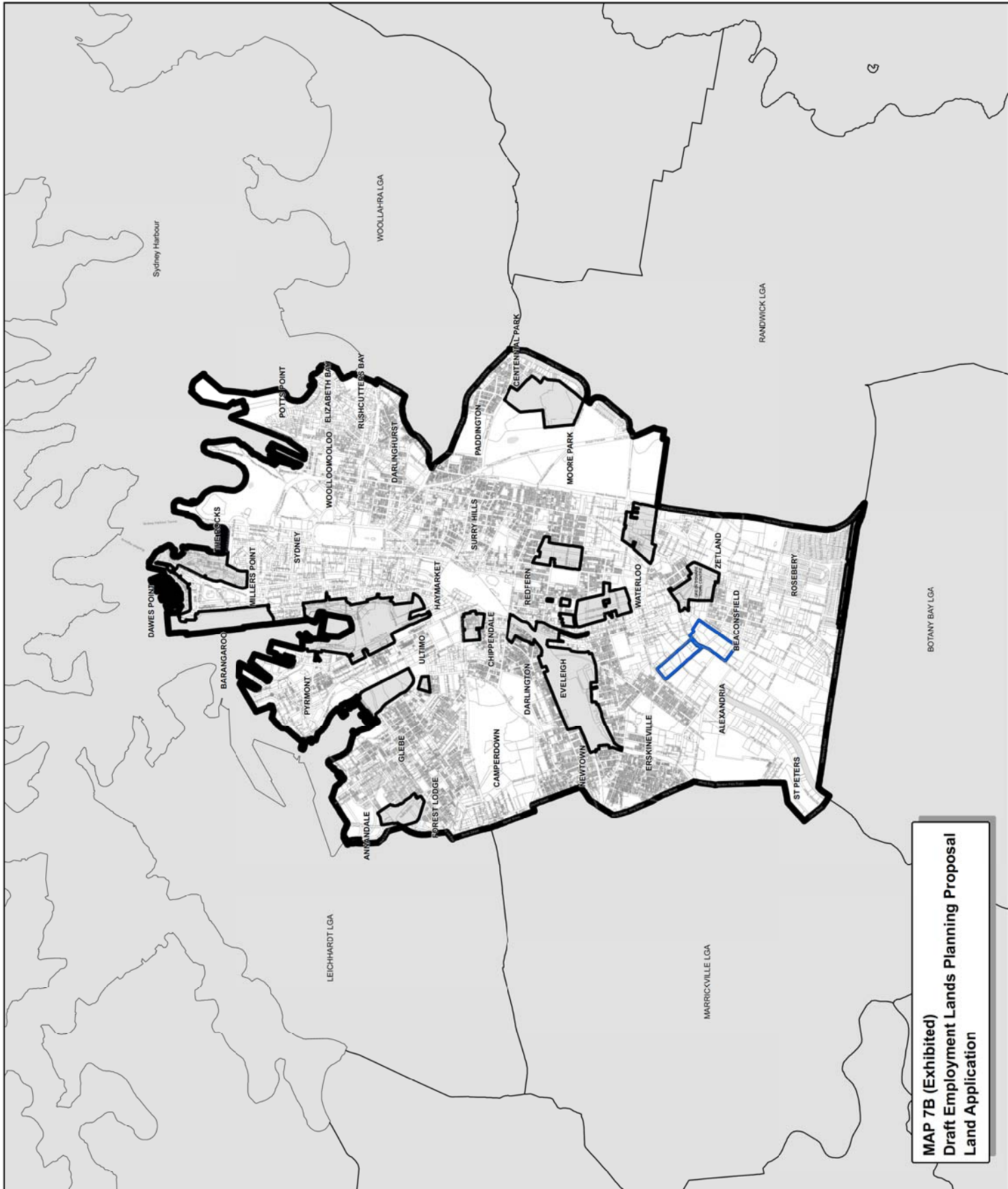
Land Application Map

-  Affected sites
-  LGA Boundary
-  Land Application - Included
-  LEP Included



Projection: GDA 1984
Zone 56

D:\C:\workspace\SLERP2012\AMQ\Amendment2_Preliminary\SLERP2012_L1.SV
ELS_SLEP2012_LAP_exhibited.mxd



MAP 7B (Exhibited)
Draft Employment Lands Planning Proposal
Land Application

Sydney Local Environmental Plan 2012



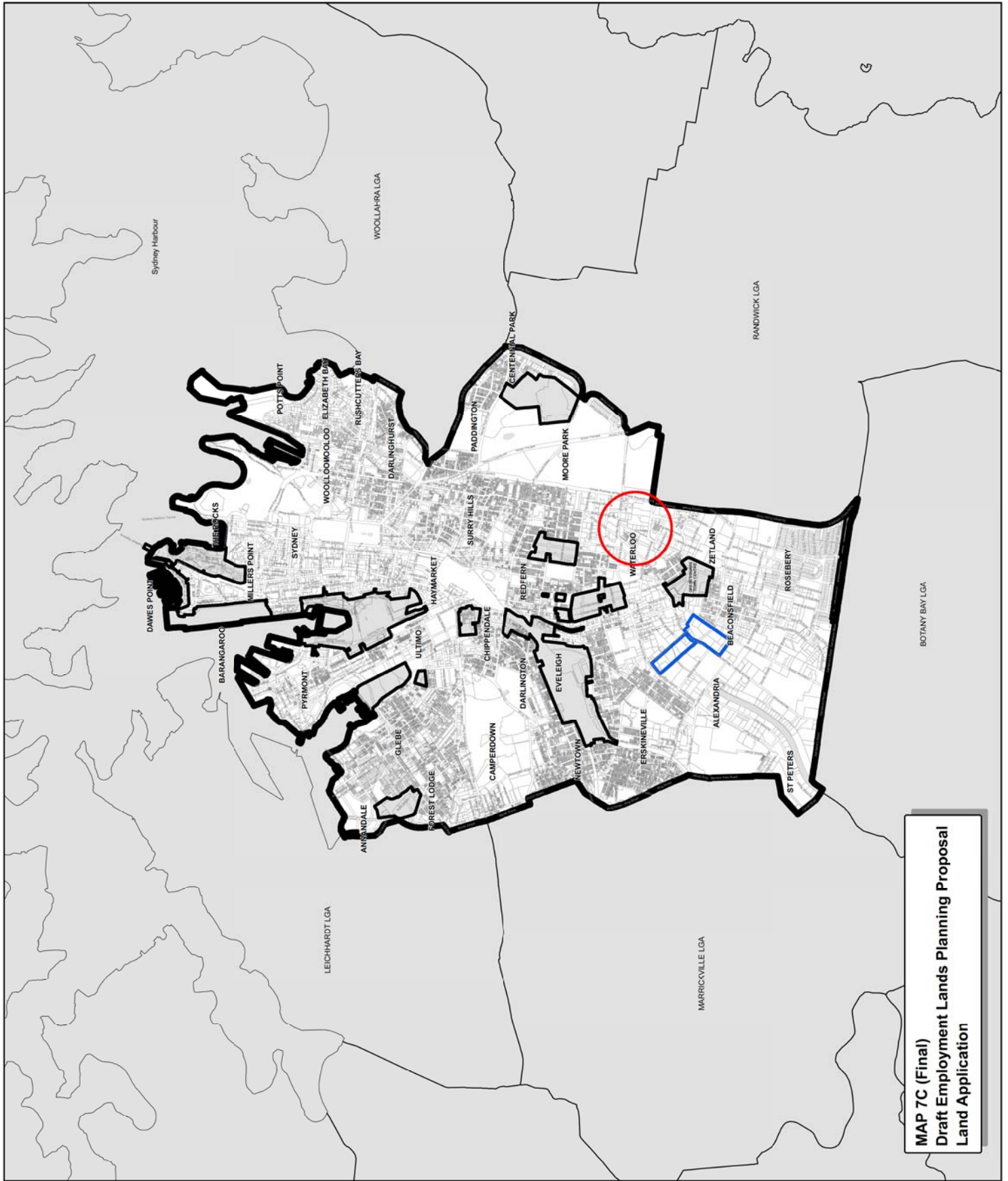
Land Application Map

-  LGA Boundary
-  Affected sites
-  Land Application - Included
-  LEP Included



Projection: GDA 1984
Zone 56

D:\C:\workspace\SLP\LEP2012\AM\Amendment2_Preliminary\SLP2012_L1.dwg
ELS_SLEP2012_LAP_Final.mxd



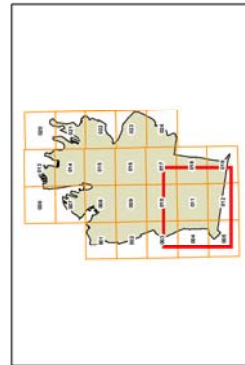
MAP 7C (Final)
Draft Employment Lands Planning Proposal
Land Application

Sydney Local Environmental Plan 2012



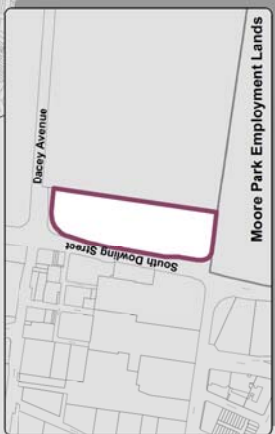
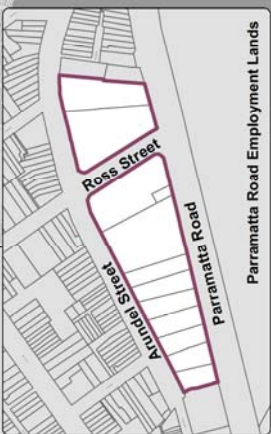
Land Reservation Acquisition Map

-  Employment Lands Strategy boundary
-  Land Reservation Acquisition
-  Classified Road (SP2)
-  Cadastre
-  Cadastre 14/08/2012 © City of Sydney

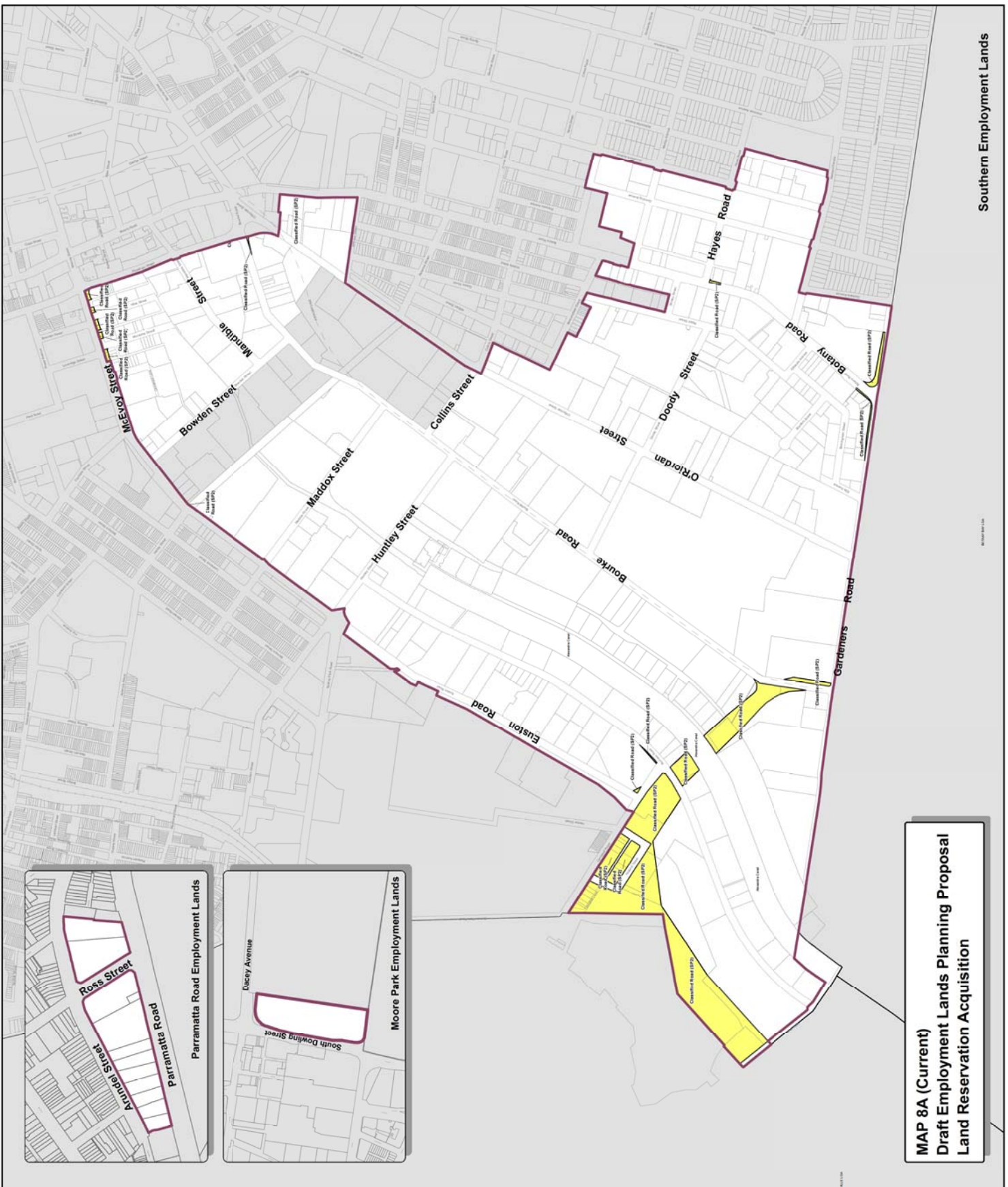


Projection: GDA 1994
Zone 56

S:\City\GIS\Projects\SP2\1214\Map\Amendment2_Footer\InPlan\5102816_ELP2
1:5 SLEP2012_LPA_current.txd



MAP 8A (Current)
Draft Employment Lands Planning Proposal
Land Reservation Acquisition

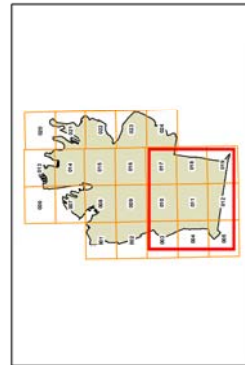


Sydney Local Environmental Plan 2012

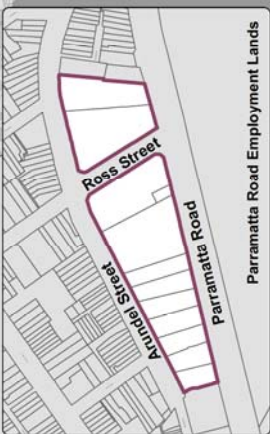


Land Reservation Acquisition Map

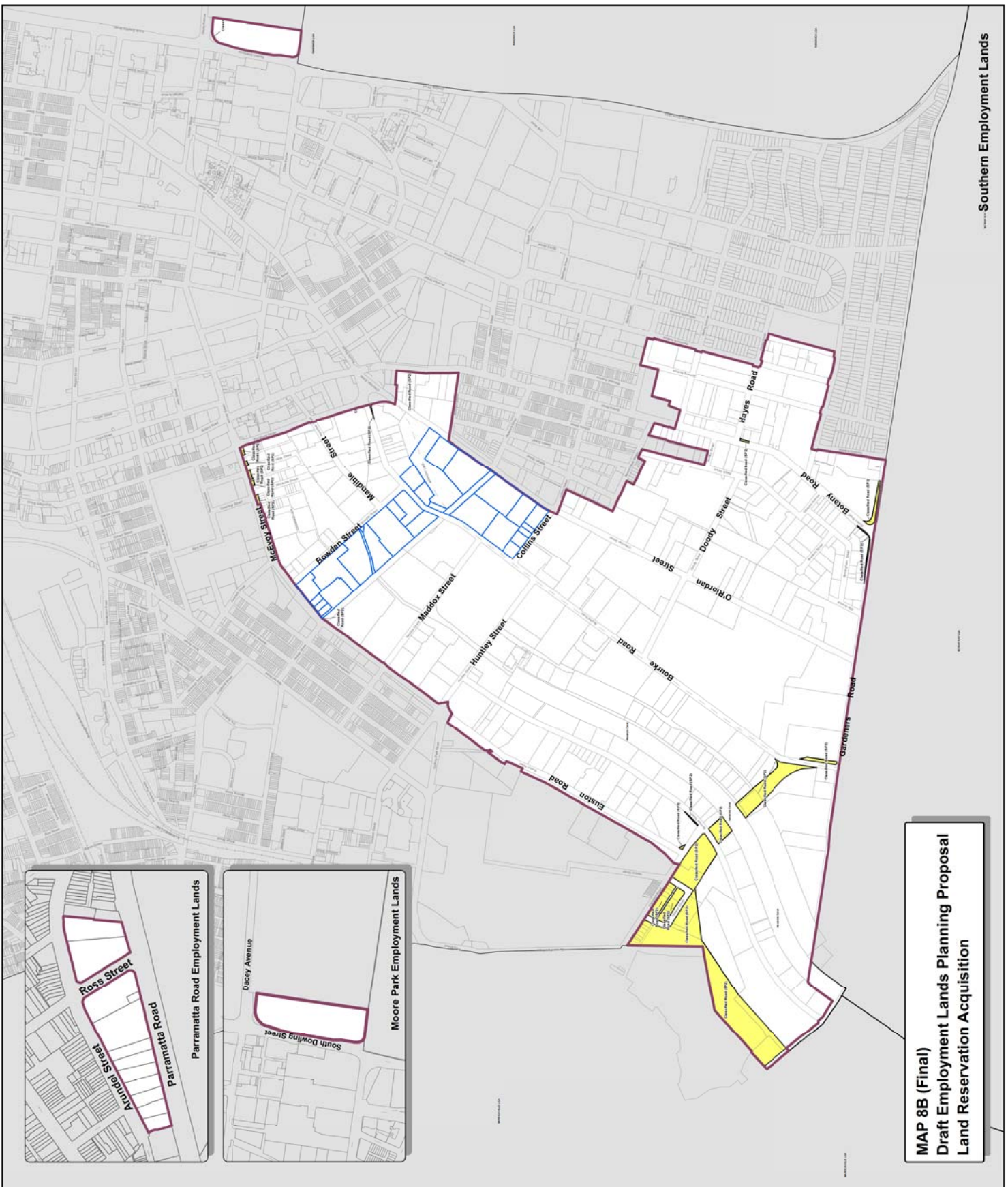
- Employment Lands Strategy boundary
- Affected sites
- Land Reservation Acquisition**
- Classified Road (SP2)
- Cadastre**
- Cadastre 14/08/2012 © City of Sydney



Projection: GDA 1994
Zone 56
S:\C:\workspace\UR\EL\EP12\AM\2012\Amendment2_Final\shaban\5102816_ELP12



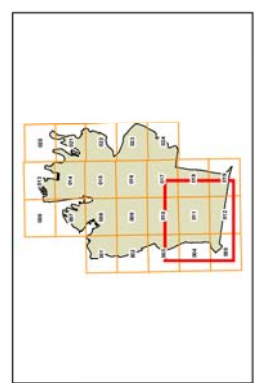
MAP 8B (Final)
Draft Employment Lands Planning Proposal
Land Reservation Acquisition



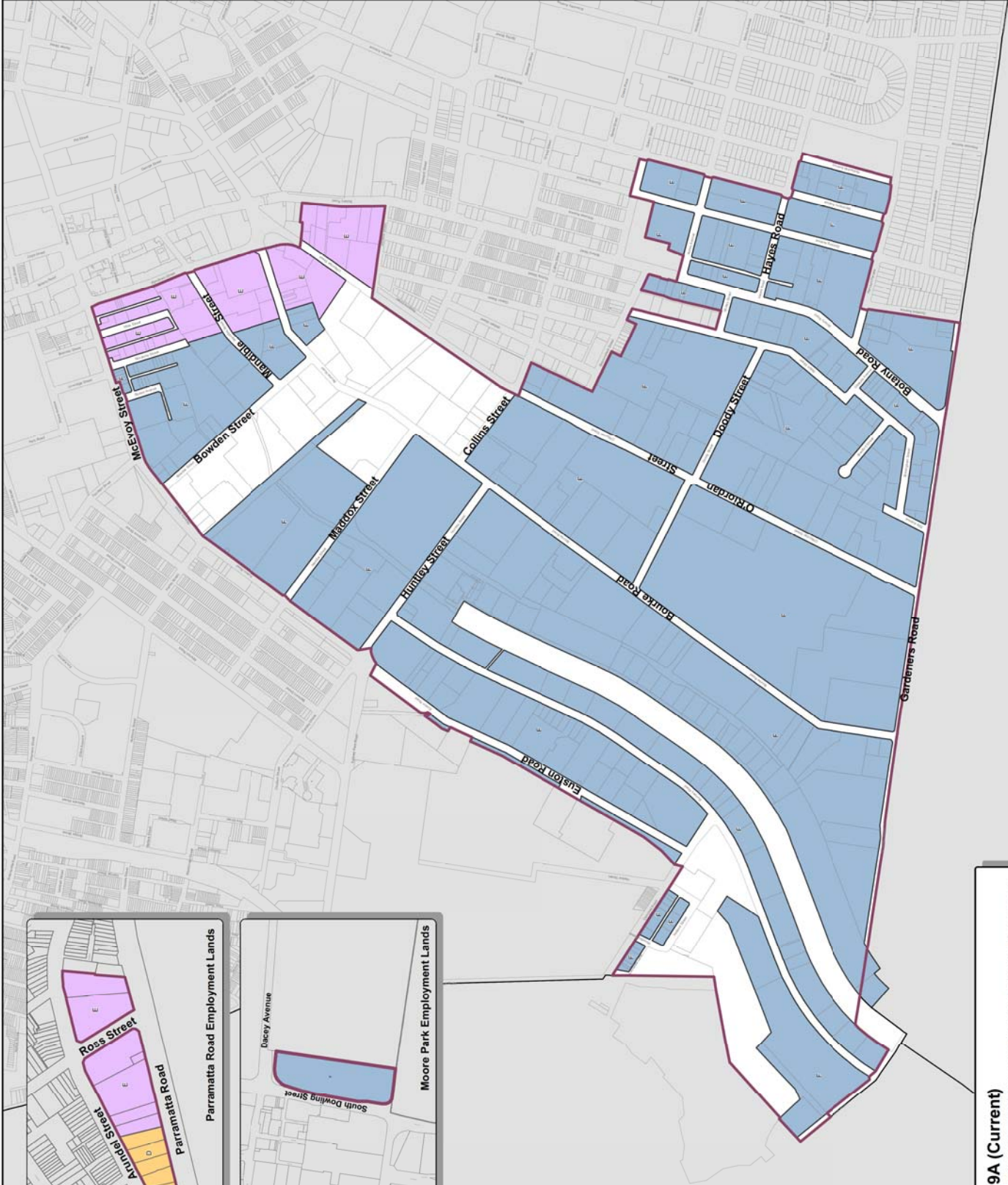
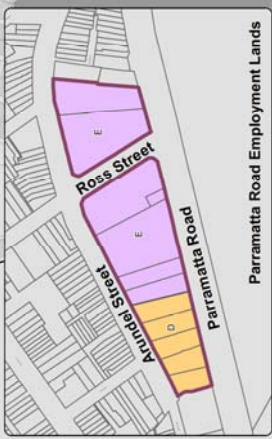
Southern Employment Lands

**Public Transport Accessibility Level
Map**

- Employment Lands Strategy boundary
- Public Transport Accessibility Level**
- Category D
- Category E
- Category F



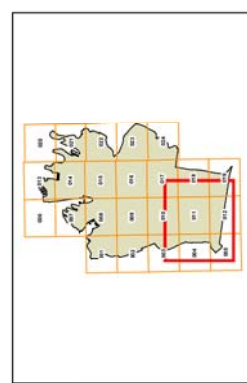
Projection: GDA 1984
Zone 56
E:\S:\Projects\ELSP\2012\Amendments2_PublicTransport\5102695_ELSF



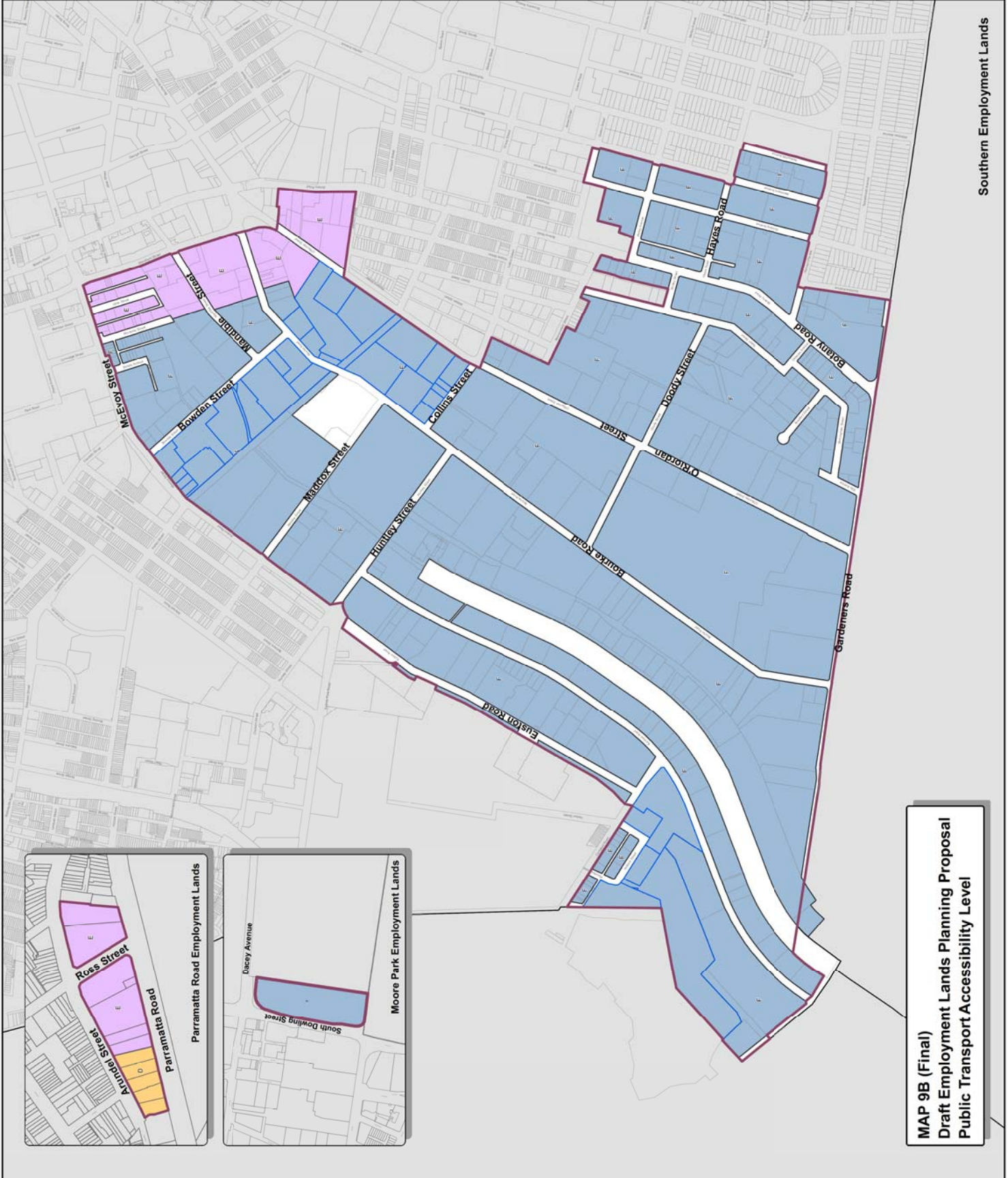
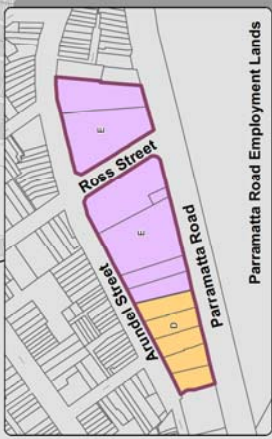
**MAP 9A (Current)
Draft Employment Lands Planning Proposal
Public Transport Accessibility Level**

Public Transport Accessibility Level
Map

- Employment Lands Strategy boundary
- Affected sites
- Public Transport Accessibility Level**
- Category D
- Category E
- Category F



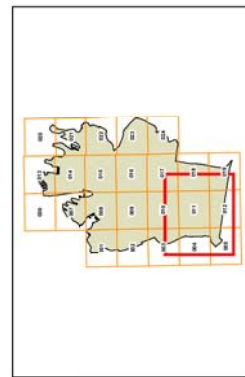
Projection: GDA 1984
Zone 56
E:\S:\Projects\2012\LEP12\Amendments2_PublicTransport\5102695_115P



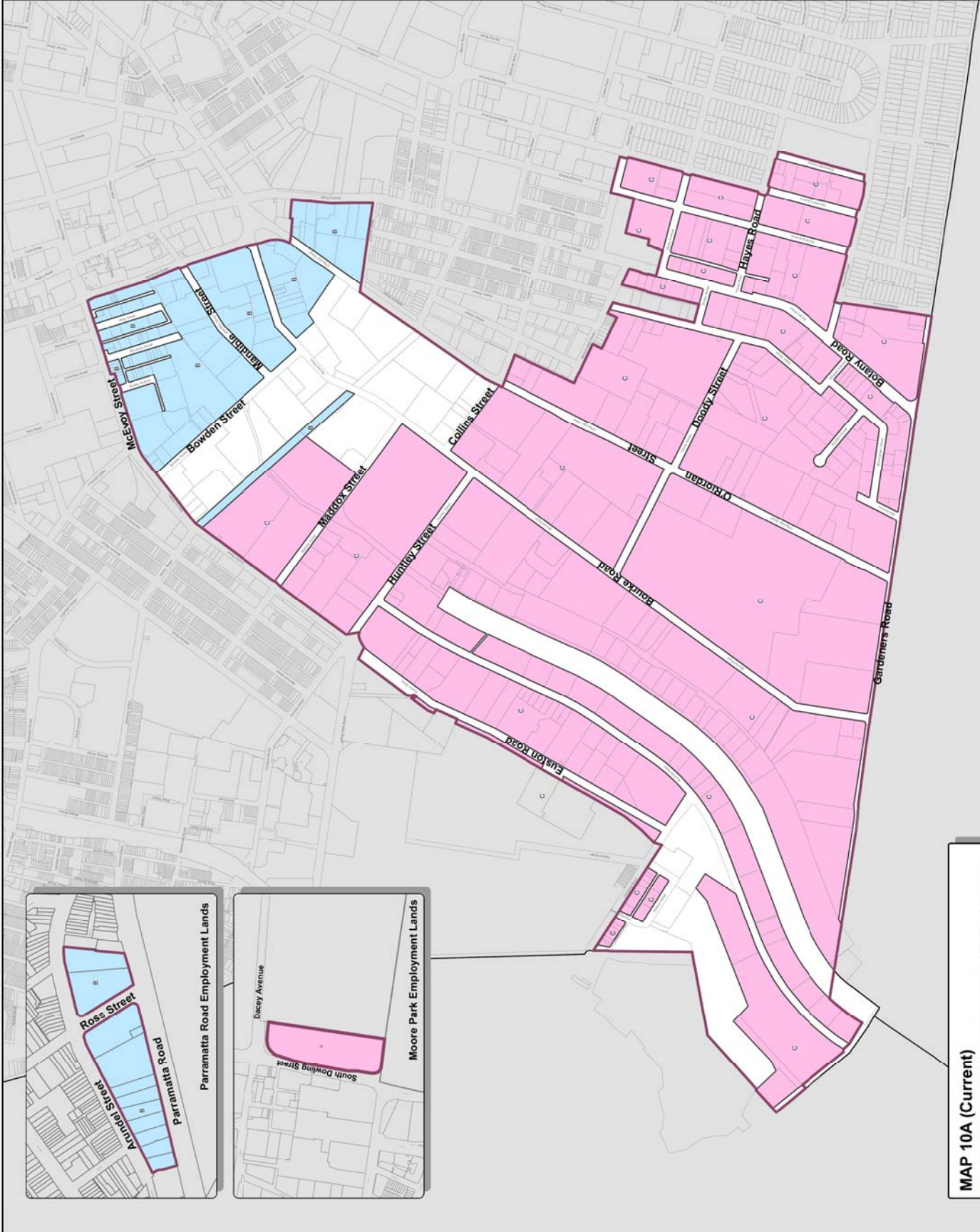
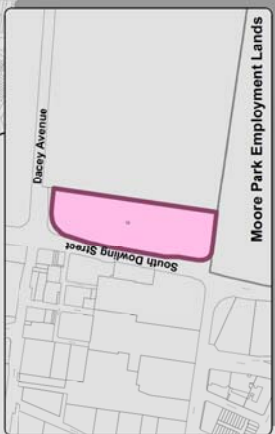
MAP 9B (Final)
Draft Employment Lands Planning Proposal
Public Transport Accessibility Level

**Land Use and Transport Integration
Map**

- Employment Lands Strategy boundary
- Land Use and Transport Integration**
- Category A
- Category B
- Category C



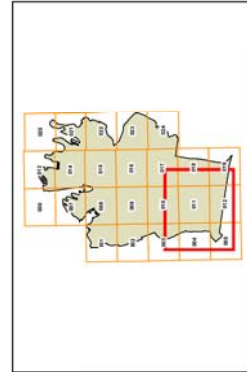
Projection: GDA 1984
 EPSG:31471
 Zone: 56
 E:\S:\SLEP2012_LUT_spatial.mxd



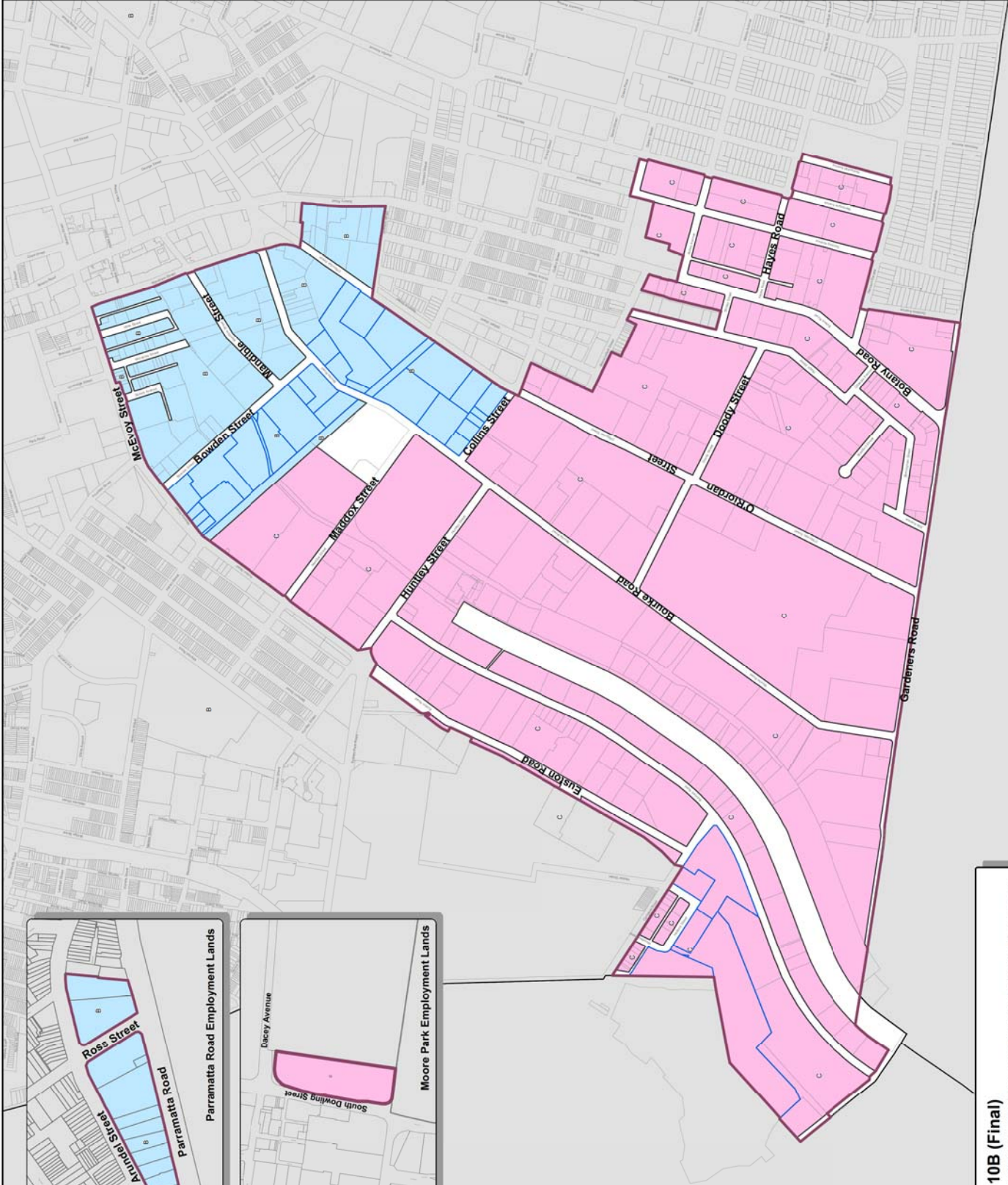
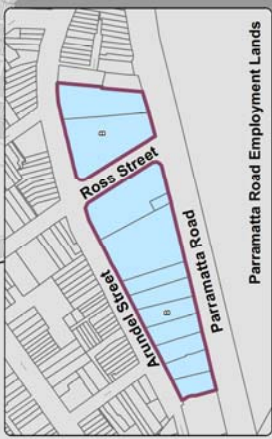
**MAP 10A (Current)
 Draft Employment Lands Planning Proposal
 Land Use and Transport Integration**

**Land Use and Transport Integration
Map**

- Employment Lands Strategy boundary
- Affected sites
- Land Use and Transport Integration**
- Category A
- Category B
- Category C



Projection: GDA 1984
Zone 56
E:\S:\Projects\SLUP\2012\Amendment2_PlanEnviron\51021205_EIS\ EIS_SLEP2012_LUT_Infoboard.mxd



**MAP 10B (Final)
Draft Employment Lands Planning Proposal
Land Use and Transport Integration**